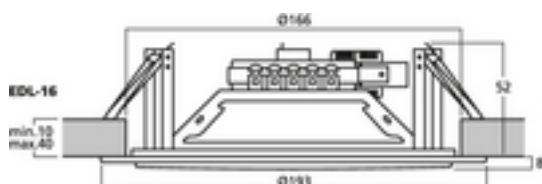
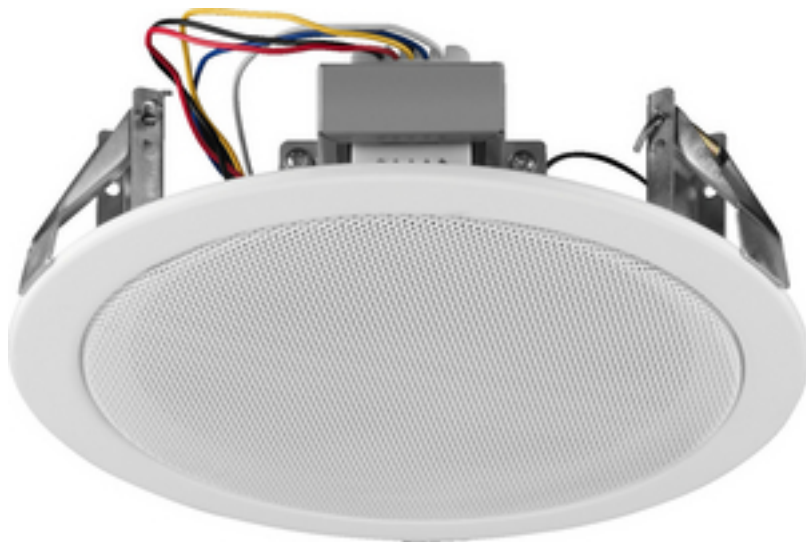


EDL-16 - PA Loudspeaker

100V



PA ceiling speaker

- 100 V line technique
- 15 cm (6") full range speaker
- Metal housing with protective speaker grille
- Power taps: 10/6/3/1.5 W
- Quick-mounting facility with spring clips
- Connection via spring-loaded terminal
- For a ceiling thickness from 10 to 40 mm

Tekniset tiedot:

Impedance (Z)	: -
Transmission method	: 100 V
Frequency range	: 90-16,000 Hz
Resonant frequency (fs)	: -
Rec. crossov. frequ. (fmax.) (12 dB/oct.)	: -
Power rating (RMS)	: 10/6/3/1.5 W
Peak music power output (MAX)	: -
Sensitivity	: 92 dB/W/m
Max. rated SPL	: 102 dB
Max. voltage	: -
Radiation angle, horizontal	: -
Radiation angle, vertical	: -
Suspension compl. (Cms)	: -
Moving mass (Mms)	: -
Mech. Q factor (Qms)	: -
Electr. Q factor (Qes)	: -
Total Q factor (Qts)	: -
Equivalent volume (Vas)	: -
DC resistance (Re)	: -
Force factor (BxL)	: -
Voice coil induct. (Le)	: -
Voice coil diameter	: -
Voice coil former	: -
Linear excursion (X _{MAX})	: -
Eff. cone area (Sd)	: -
Magnet weight	: -
Magnet diameter	: -
Mounting cutout	: Å~ 166 mm
Mounting depth	: 55 mm
Mounting hole diameter	: -
Hole spacing X-axis	: -
Hole spacing Y-axis	: -
Dimensions	: Å~ 195Å mm x 55Å mm
Outside diameter	: Å~ 195 mm
Width	: Å~ 195 mm



Height	: -
Depth	: 55 mm
Protective class	: -
Admiss. ambient temp.	: 0-40 °C
Weight	: 0.8 kg
Packing unit	: 1
Type of speaker	: 150