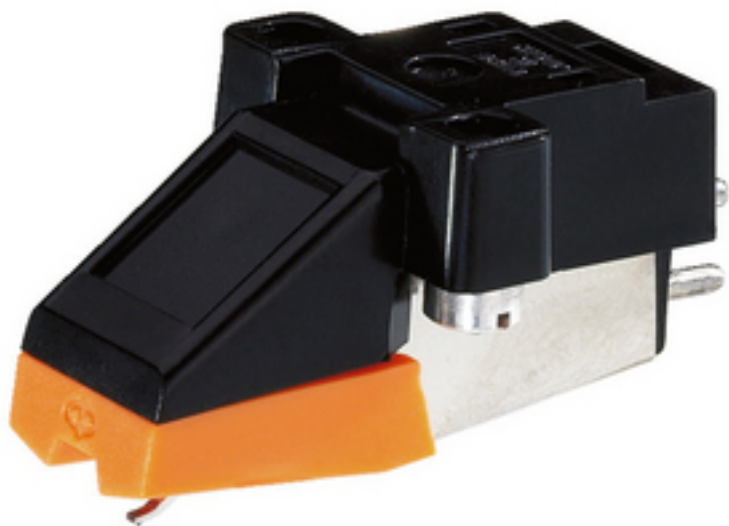


EN-24 - Magnetic Cartridge



Stereo magnetic phono cartridge system, (moving magnet).

- Diamond stylus and 1.3 cm (½") fixing
- Matching turntables of our programme (DJP-...) and as a replacement for other hi-fi turntables
- Stylus pressure: approx. 1.5 g

Tekniset tiedot:

| | |
|------------------------|----------------------|
| Frequency range | : 20-20,000 Hz |
| Output voltage | : 5 mV/1 kHz, 5 cm/s |
| Terminal impedance | : 47 kOhm/200 pF |
| Impedance | : 1.2 kOhm |
| DC resistance | : 300 Ohm |
| Channel balance | : < 2.5 dB/1 kHz |
| Channel separation | : ? 24 dB/1 kHz |
| Dyn. compliance | : 5 µm/mN |
| Recom. stylus pressure | : 3 g (2.5-3.5 g) |
| Stylus tip | : conical 0.6 µm |
| Weight | : 4.5 g |