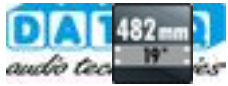


# SPL-2TS - Limiter



2-channel limiter,  
with timer function.

- Adjustable via threshold and output
- For sealing
- Time slot, 3 different limitings possible each day
- Installation licence required for setting up
- XLR inputs and outputs

## Tekniset tiedot:

Description	: 2-channel limiter
Frequency range	: 20-20,000 Hz
Control range	: -
Control frequencies	: -
Input signal	: -
Input sensitivity	: -
Input impedance	: 10 kOhm
Output signal	: -
Output impedance	: 600 Ohm
Gain	: -
Phantom power	: -
Compression	: -
Gate ratio	: -
Crossover frequency	: -
High-pass filter	: -
Low cut	: -
Transmission ratio	: -
S/N ratio	: ? 80 dB
Channel separation	: -
THD	: < 0.05%
Admiss. ambient temp.	: 0-40 °C
Power supply	: &acd; 230 V/50 Hz/20 W
Dimensions	: 482 x 45 x 175 mm
Weight	: 3.5 kg
Inputs	: 2 x XLR, bal.
Outputs	: 2 x XLR, bal.
Other features	: limiter threshold: -14 to +6 dBu,output attenuation: 0 to -40 dB