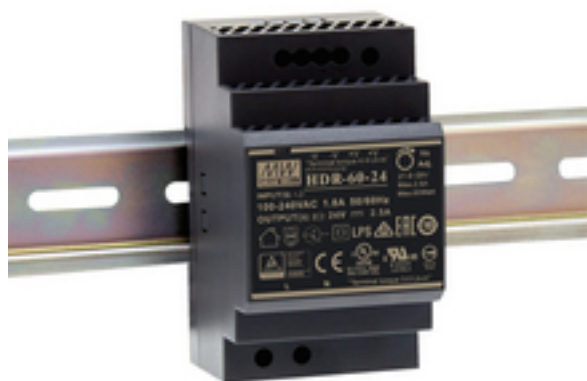


HDR-60/24 - Cap Rail Power Supply

new



Switch-mode power supply, 60 W

- For mounting onto DIN rails TS35, e.g. in distributions boards, meter panels, fuse boxes or control cabinets
- Universal input voltage: \approx 85-265 V/47-63 Hz
- Output voltage: DC 24 V/2.5 A
- Low no-load power consumption: < 0.3 W
- Fine adjustment of output voltage
- Output power limitation (LPS)
- LED for indicating operating status
- Protected against short circuit, overload, overvoltage and overheating
- EMC standard EN 61000-6-2

Supplied w/o DIN rails.

Range of applications:

- Home technology, smart home
- Building automation
- Industrial control systems
- Production automation
- Electro-mechanical devices

Tekniset tiedot:

Category	: switch-mode power supply
Input voltage	: ∿ 85-265 V/47-63 Hz
Output voltage	: DC 24 V
Output current	: 2.5 A
Charging time	: -
Trickle charge	: -
Polarity selection	: -
Switchable output voltage	: -
Reactivation	: -
Connections	: screw terminals
Cable length	: -
Short-circuit protection	: yes
Overload protection	: yes
Overheat protection	: yes
Reverse polarity protection	: -
Detection of faulty battery	: -
Protective class	: -
Admiss. ambient temp.	: -30-+70 °C
Dimensions	: 52.5 x 90 x 58.4 mm
Weight	: 190 g
Position	: -
Other features	: -